

MindPlan

Installation guide

Status September 2011



Content

Content	2
System requirements	3
Standalone for Windows	3
Composite for Windows	3
Mac	3
Linux	3
Download the software application	3
Extract the installation file	3
Install the software application	4
Important installation advices	5
Update-Installation Composite Application	5
Mac Installation	6
Upgrade from MindPlan 3.2 to 3.3	7
Open MindPlan	8
After installing Standalone/Mac application	8
After installing the Composite Application	8
Request and import a licence key	10
Information	10

System requirements

Please note the different system requirements for the respective MindPlan installations:

Standalone for Windows

- IBM Lotus Notes 6.5.x, 7.x, 8 Basic,
- Windows XP, Vista, 7
- min. 500 MB RAM

Composite for Windows

- IBM Lotus Notes/Domino 8.02 or 8.51
- not applicable for Lotus Notes 8 Basic (in this case Standalone to be used)
- Windows XP, Vista, 7
- min. 500 MB RAM

Mac

- IBM Lotus Notes/Domino 8.5.x
- Leopard 10.5, Snow Leopard 10.6
- mindestens 1 GB RAM

Linux

- IBM Lotus Notes/Domino since 8.x
- Ubuntu 8.04 LTS
- min. 1 GB RAM

Download the software application

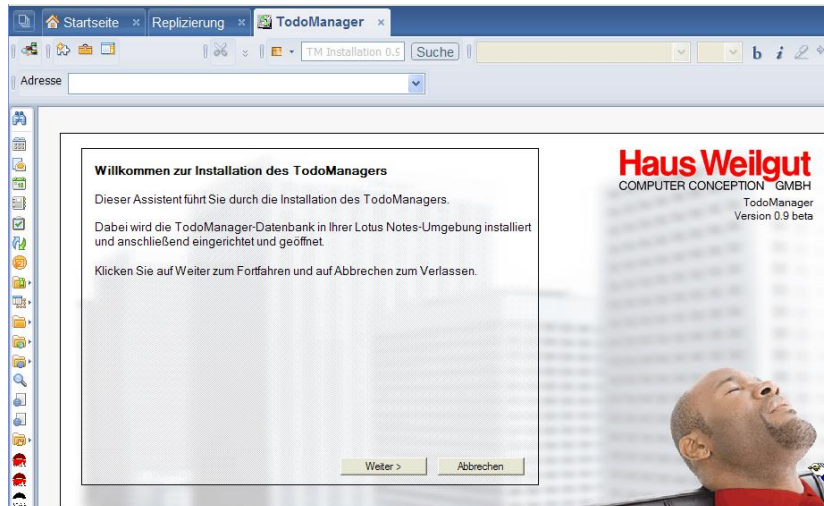
- 1 After registering, you will be forwarded to the respective download page.
- 2 Click on **download** and save the file on your desktop.

Extract the installation file

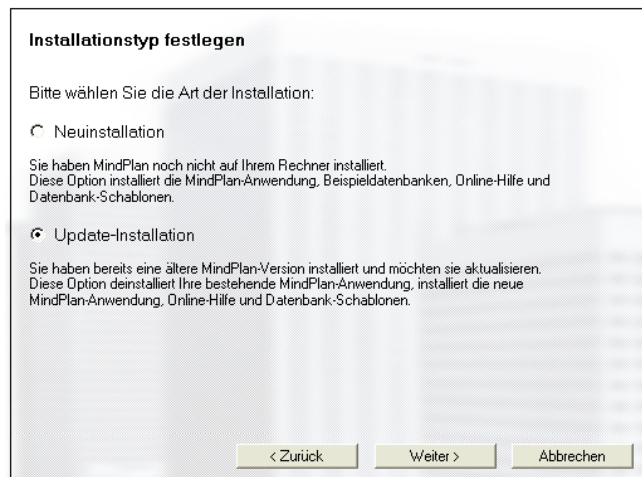
- 1 Double click on the saved file.
- 2 Extract the .nsf file in your folder C:\Programme\Lotus\Notes\data oder in any other folder you are told by your admin.

Install the software application

- 1 Open your Lotus Notes application.
- 2 Open the above menu
 - **File** → **Database** → **Open** (Lotus Notes 7.x)
 - or **File** → **Open** → **Lotus Notes application** (Lotus Notes 8.x)
 - or use the short cut **Strg+O**.
- 3 Select the **extracted installation file**.



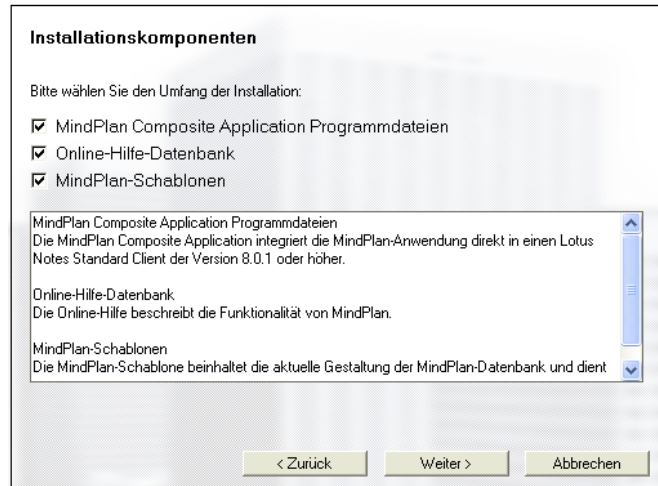
- 4 Confirm with **Open**.
- 5 Follow the installation wizard. Confirm each installation step by clicking on the button **forward**. Please read the chapter **Important installation advices** page 5.



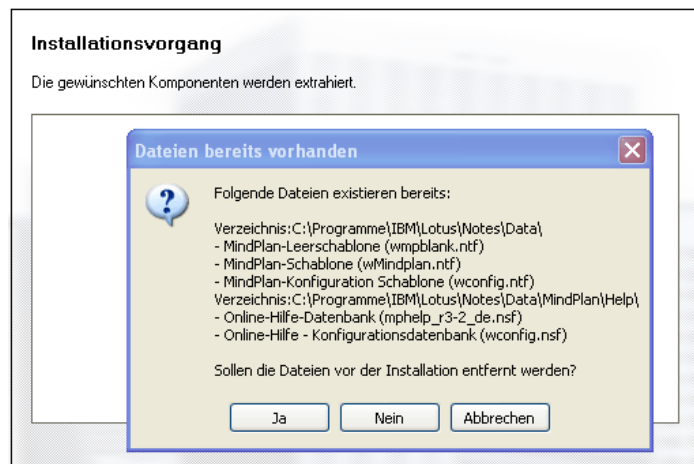
- 6 If you want to upgrade a former MindPlan installation, please select **Update-Installation**. All existing databases will be retained for further use. In case of a first installation please select **new installation**.

Important installation advices

Update-Installation Composite Application

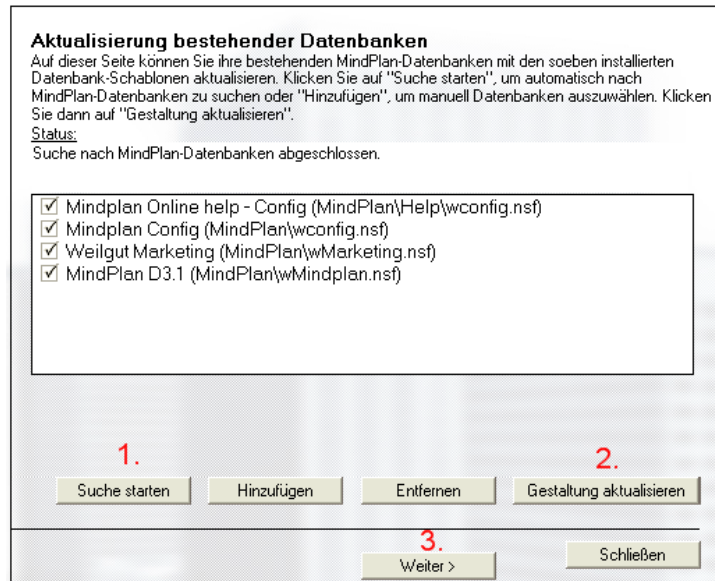


Installation step **installation components**: the complete installation is recommended to be able to use the full functionality.

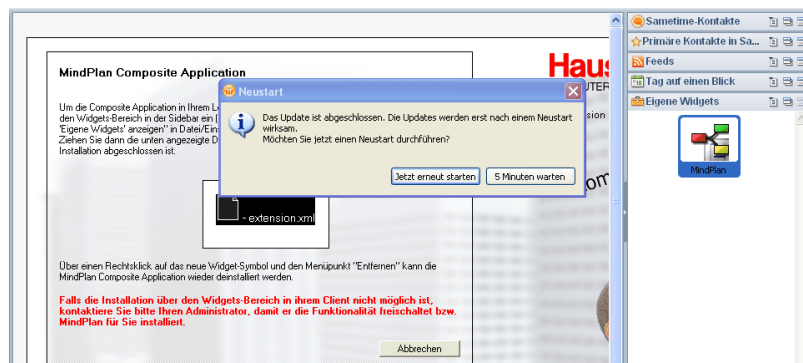


While installing please confirm the deletion of the suggested files to be substituted by new, extended files.

In this process no personal settings, files or databases, which you have created in former version, will be deleted.



Installation step **Refreshing existing databases**: Please start first the **Start search (1)**, mark all shown databases and confirm by clicking on **Refresh design (2)**. Confirm with **Forward (3)**.



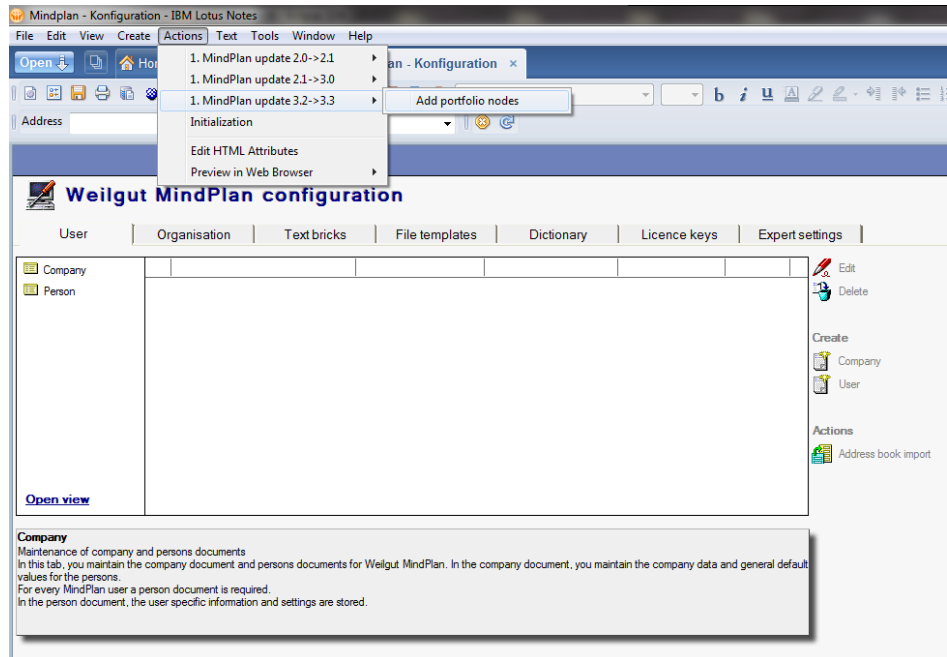
- 1 To install the widgets please click **own widgets** on the right widget bar. Please confirm the installation when requested and wait until the installation step is completed. This installation step permits the full use of the composite application.
- 2 Restart the software as described in **Open MindPlan** on page 8.

Mac Installation

Install the Mac application and the database for Mac. Installing the database, please **de-select** the option **composite application**.

Upgrade from MindPlan 3.2 to 3.3

To upgrade from 3.2 on 3.3 please select the usual update option in the installation database to refresh.



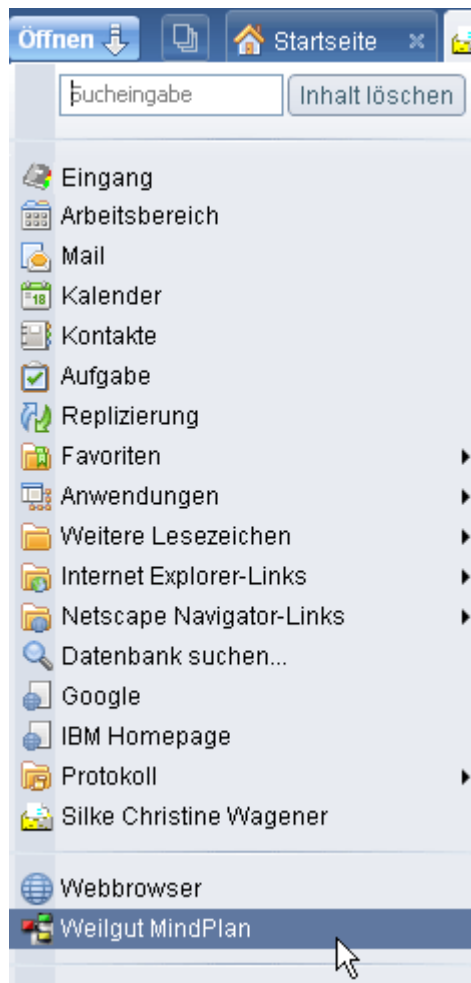
Then chose the action **1. MindPlan update 3.2 → 3.3 → Add portfolio nodes** in the config database, to get the **new project portfolio functions**.

Open MindPlan

After installing Standalone/Mac application

- 1 A restart will be requested. Please confirm the restart.
- 2 In case you have no licence key, you will see a window where you can order a licence key. Description see **Request and import a licence key** on page 10.

After installing the Composite Application

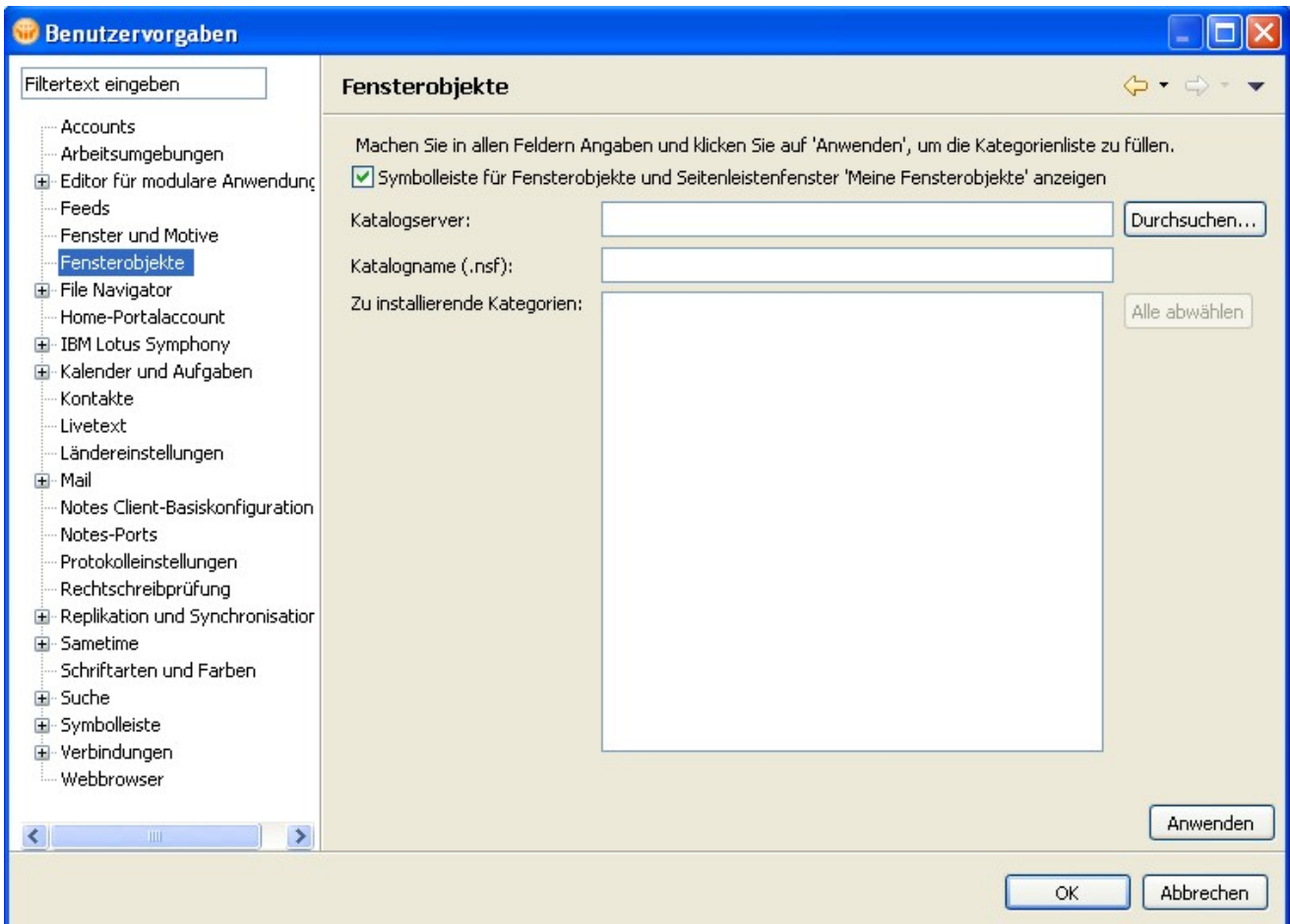


- 1 Open your Lotus Notes and **select MindPlan in the bookmark bar** on the left.
- 2 or click on the above button **open** to start MindPlan application.
- 3 In Lotus Notes 8.5.1 you can start the MindPlan application with a click on the MindPlan icon in the right bar under **own widgets**.

Problem solving widgets

When the right bar with **own widgets** is not available,

- then read the description in the installation wizard,
- or change the settings in your Lotus Notes client:



- 1 Chose **File** → **Settings**.
- 2 Click on the left menu window objects and make sure that the **symbol bar ...** is activated.

Request and import a licence key

This dialog appears when first opening Weilgut MindPlan after proceeding a new installation or an update installation on a major release change – each requiring a new licence key.



Free versions

Start Weilgut MindPlan and decide for

- a temporarily limited test licence: Chose **Request a test licence key**, confirm with **OK**, and then follow the advices.
- a free personal edition: Chose **Request the free MindPlan personal licence key** confirm with **OK**, and then follow the advices.

You will receive the licence key in an E-mail. Use then the function **Import test licence key** or **Import full version** to complete the licensing.

Full versions

You possess a licence of a provider: Use then the function Use then the function **Import test licence key** or **Import full version** to complete the licensing.

Read-only

You just want to be able to read MindPlans of your colleagues? Then mark **Use MindPlan** and confirm with **OK**. Don't request a licence key.

Information

Find the user guide in the online help of Weilgut MindPlan. More information and documents are available under www.mindplan.com.